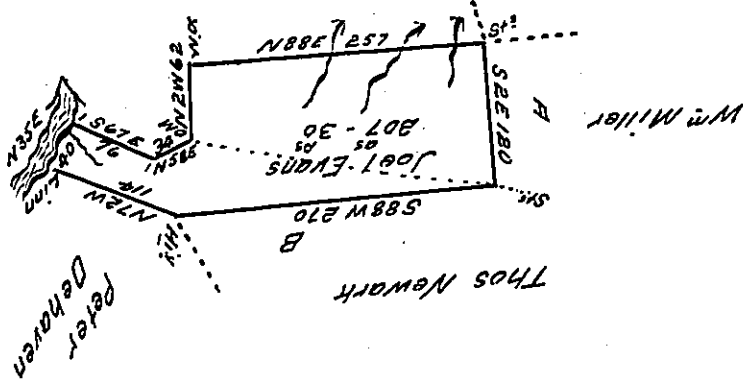


John Smith Jnr
a survey made by Jas Pollock



*Draught of a Tract of Land Situate in Lawrance Township
 Clearfield County on the West Branch of Susquehanna River and about
 2 Miles above Chincledamoores Old Town Containing Two Hundred and Seven
 Acres Thirty Perches and the Usual Allowance of Six per Cent for Roads
 &c. Surveyed the 11th Day of Octo^r 1828 in Pursuance of a Warrant Dated
 the 7th Day of Sept^r 1773 Granted to Joel Evans for 200 Acres*

To Gabriel Heister Esq^r David Ferguson

Surveyor General

*Note the above Survey Interferes Wholly with Tho^s Newark and W^m
 Miller Warrants Dated 10th of March 1785 Resurveyed the 11 Octo^r 1802
 Unoccupied Old Lines Except A & B*

DF

Miller & Newark Patented

*IN TESTIMONY that the above is a copy of the original remaining on file in
 the Department of Internal Affairs of Pennsylvania, made
 conformably to an Act of Assembly approved the 16th day of
 February, 1833, I have hereunto set my Hand and caused
 the Seal of said Department to be affixed at Harrisburg,
 this Eighteenth day of January 1909*

Henry Howell
 Secretary of Internal Affairs.